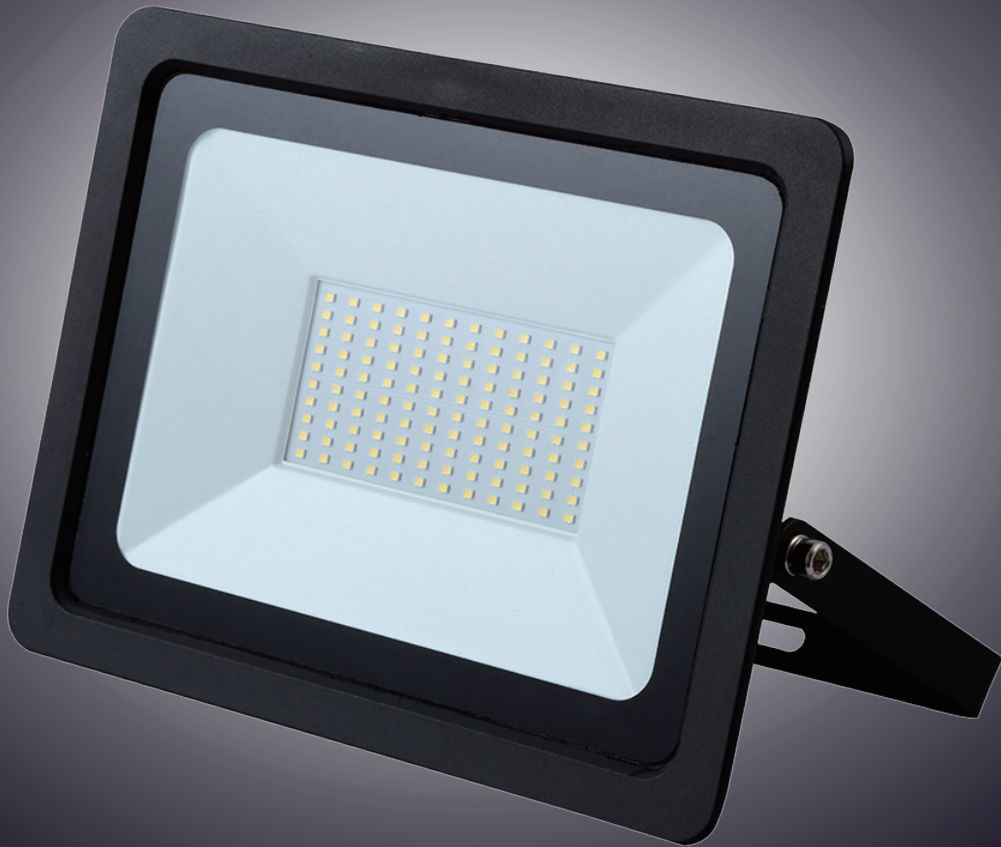


LED FLOOD LIGHT

LED



SMART II TYPE IP66

Model	Power	Voltage	Life time	PF	Beam Angel	The Size
MLST-20	20W	AC 165-265V	30000h	≥0.9	120°	127*115*30mm
MLST-30	30W	AC 165-265V	30000h	≥0.9	120°	150*126*35mm
MLST-50	50W	AC 165-265V	30000h	≥0.9	120°	205*175*40mm
MLST-100	100W	AC 165-265V	30000h	≥0.9	120°	243*210*45mm
MLST-150	150W	AC 165-265V	30000h	≥0.9	120°	290*248*50mm
MLST-200	200W	AC 165-265V	30000h	≥0.9	120°	360*290*50mm

2
ANOS
GARANTIA

NO
UV/IR

NOT
DIMMABLE

INCANDESCENT
0.3 seg

25.000h

50.000h
ON OFF

CE

RoHS
2002/95/EC



Hg
0.0mg

